



## OVERVIEW



Park Hyatt Doha is located in Msheireb (meaning "Place of water", in Arabic), the cultural heart of Doha, in close proximity to the city's most iconic experiences. As the tallest hotel in Msheireb Downtown, the property offers Doha's most enviable views and a sense of place.

### ACCOMMODATION

- 187 distinctive guest rooms including 33 uniquely designed suites
- Accommodations designed to optimize views of the Corniche and West Bay
- Connecting to the super structure, a six-story annex houses a two-story spa, restaurants, meeting and events spaces
- Interiors inspired by the Qatari desert and traditional architecture
- Premier suites offer outdoor terraces with the areas most elevated and sweeping views of Doha

### All accommodations offer :

- Guestrooms and Suites range in size from 40 to 400 sqm (431 to 4306 sqft)
- Floor to ceiling views with opening windows
- Large bathrooms with TV, double vanity, deep soak bathtub, walk-in rain shower and separate water closet
- Selection of exclusive bath amenities by Le Labo
- Nespresso coffee machines
- Complimentary WiFi

### SERVICES & FACILITIES

- 24-hour in-room dining
- Les Clefs D'or Concierge
- Hypoallergenic bedding and baby crib available upon request
- Transportation arrangements available upon request
- Same day laundry and pressing services
- Complimentary shoe shine service
- Business Centre
- Complimentary valet parking

### RESTAURANTS & BARS

- Anis - An all day eatery offering generous, handmade, nutritionally-balanced food, coffees, juices and smoothies. Boasting direct street access with outdoor dining, the restaurant is a social hub for health conscious locals, office workers and visitors to Msheireb Downtown.
- Sora - A modern Japanese restaurant and lounge perched 21 floors above Msheireb Downtown. A spectacular outdoor terrace offers the precincts most panoramic views while serving Robata, Sushi, Sashimi, Tempura, desserts and an extensive beverage collection.
- Opus - A composition by Michelin Star Chef, Jean-Francois Roquette of Park Hyatt Paris in celebration of French & Qatari cuisines. Prepared in an open kitchen, cooked from the heart and served sharing-style, the way food is meant to be enjoyed. Private dining rooms available.

### CONFERENCES & BANQUETS

- The Apartment - An 800 sq.m (8611 sq.ft) residential-style event space encompassing Ballroom (made up of Salons I, II and III), The Loft, The Study, Salon IV and show kitchens

- The Study - Encompasses a show kitchen with separate lounge and living room, setting the scene for an elegant event as if in a private residence. Perfect for private ladies-only social events.
- The Loft - Entails a show kitchen and beverage servery, making it ideal for exclusive social events
- All meeting rooms feature natural daylight, are elevator accessible only via exclusive street access and include the convenience of complimentary valet parking
- The hotel's premier accommodation suites (Presidential and Diplomat) are available for private events

### RECREATIONAL FACILITIES

- A two story-spa duplex featuring eight suites that address lifestyle-based wellness through massage, body scrubs and facials.
- Dedicated male and female gyms (largest in Msheireb) and spas.
- Employing Swiss luxury spa brand, Valmont, and Australian, dedicated male spa brand, Vitaman, both exclusive to Park Hyatt Doha
- Facilities include; whirlpool, steam room, sauna, outdoor 20m (66 ft) swimming pool and beauty salon by Aldo Coppola of Milan.
- Gyms are flooded with natural light, equipped with Technogym, and offer fitness instruction plus physio support

### PLACES OF INTEREST

- Souq Waqif
- Gold Souq
- Falcon Souq
- Museum of Islamic Art
- Msheireb Museums
- Fire Station Museum
- Qatar National Museum
- Al Bidda Park
- Corniche

Sikkat Wadi Msheireb Street,  
Msheireb Downtown Doha,  
PO Box 80978. Doha, Qatar  
parkhyattdoha.com

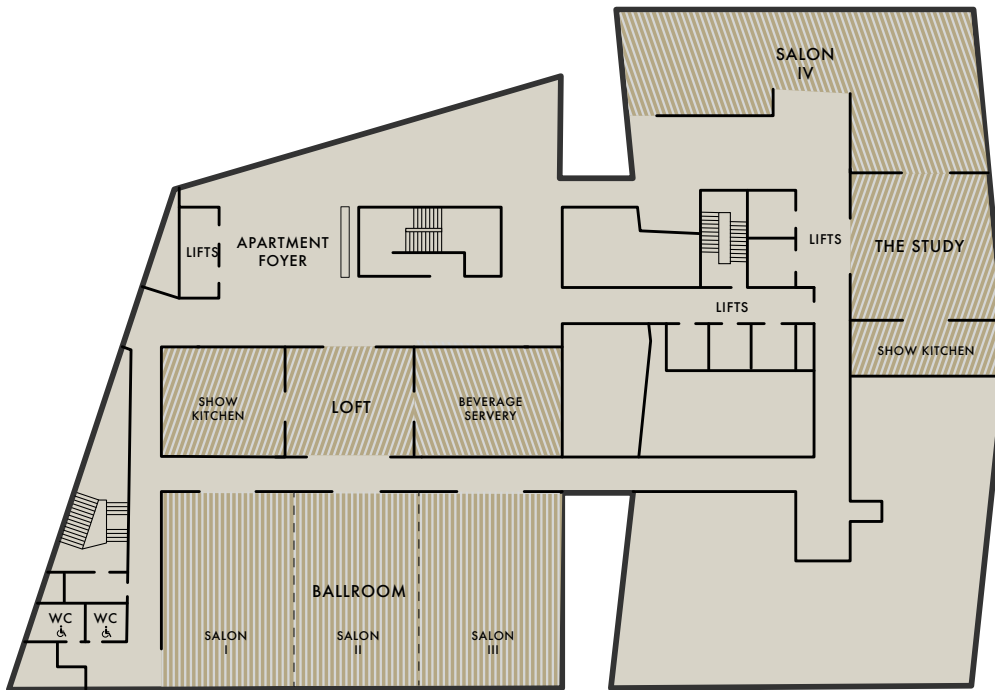
T. +974 4009 1234

© @parkhyattdoha  
f fb.com/parkhyattdoha



## FLOOR PLAN & DIRECTIONS

### THE APARTMENT – MEETING & EVENT FLOOR



## DIRECTIONS

### DRIVING FROM HAMAD INTERNATIONAL AIRPORT

Take the Ras Abu Aboud Express way to the Doha Corniche. Upon reaching the Pearl Monument, turn left on Al Asmakh street. Continue straight on Al Asmakh street and merge right onto Wadi Musheirib street. Park Hyatt Doha is located on the corner of the second street on the right.

### DISTANCES FROM THE HOTEL

- Msheireb Metro station – 0.2 km, 2 mins walk
- Msheireb Museums (4) – 0.9 km, 6 mins walk
- Souq Waqif (marketplace) – 1.4 km, 5 mins walk, 3 mins by car
- Amiri Diwan (seat of govt) – 1.7 km, 4 mins by car
- Doha Port – 2.5 km, 8 mins by car
- Museum of Islamic Art – 2.7 km, 8 mins by car
- National Museum of Qatar – 3.0 km, 9 mins by car
- Corniche (waterfront) – 5.1km, 10 mins by car
- Hamad International Airport – 16 km, 15 mins by car










Sikkat Wadi Msheireb Street, T. +974 4009 1234  
Msheireb Downtown Doha,  
PO Box 80978. Doha, Qatar  
parkhyattdoha.com

@parkhyattdoha  
fb.com/parkhyattdoha



## ROOM DIMENSIONS & CAPACITIES

ROOM NAME	ROOM DIMENSIONS <i>Length x Width x Height</i>	SQUARE FEET SQUARE METERS	BANQUET	RECEPTION	THEATER	CLASSROOM	BOARDROOM	U-SHAPE	HOLLOW SQUARE	EXHIBITION
										
FIRST FLOOR										
Salon I	26 x 41 8m x 12.5m x 4.3m	1076 100	30	55	30	36	36	24	24	36
Salon II	26 x 41 8m x 12m x 4.3m	1076 100	30	55	30	36	36	24	24	30
Salon III	26 x 41 8m x 11.5m x 4.3m	1044 100	30	55	30	36	36	24	24	30
Salon I, II & III	26 x 123 8m x 36m x 4.3m	3197 297	105	190	98	120	144	52	96	66
Salon IV	75 x 21 23m x 6.5m x 3m	1615 150	40	95	65	69	56	36	72	66
Show Kitchen	23 x 23 7m x 6m x 3m	861 50	—	12	—	—	—	—	—	—
Beverage Servery	23 x 23 7.5m x 7m x 3m	861 50	—	20	—	—	—	—	—	—
Loft	23 x 69 7m x 21m x 3m	2583 155	—	60	—	—	—	—	—	—
Study	26 x 52 7m x 9m x 3m	1076 63	16	12	—	—	—	—	—	—

Sikkat Wadi Msheireb Street, T. +974 4009 1234  
 Msheireb Downtown Doha,  
 PO Box 80978, Doha, Qatar  
 parkhyattdoha.com

@parkhyattdoha  
 fb.com/parkhyattdoha